



ANCHOR THREAD[®]

safety built in

WWW.ANCHORTHREAD.COM

**Model: AT-500-LOCK-PLATE
INSTRUCTION MANUAL**

AT-500-LPN-MPII-V3R2

US PATENT #: 10,689,841
INTERNATIONAL PATENTS PENDING

ICC-ES ESR-4788

IMPORTANT

READ INSTRUCTIONS CAREFULLY

TABLE OF CONTENTS

INTRODUCTION

APPLICABLE SAFETY STANDARDS

WORKER CLASSIFICATIONS

PRODUCT SPECIFIC APPLICATIONS

COMPONENTS

SPECIFICATIONS

INSTALLATION & USE

MAINTENANCE & STORAGE

INSPECTION

SAFETY INFORMATION

FOR PROFESSIONAL USE ONLY BY JOB CONSTRUCTION TRADESPERSON.
PRIOR TO USE, READ AND UNDERSTAND ALL MANUFACTURER'S
INSTRUCTIONS PROVIDED WITH ANCHOR THREAD PRODUCT.
DO NOT USE ANCHOR THREAD FOR APPLICATIONS THAT ARE NOT SPECIFIED IN THE INSTRUCTIONS.

THIS DOCUMENT AND ALL OTHER COLLATERAL DOCUMENTS ARE SUBJECT TO CHANGE AT THE SOLE DISCRETION OF AJUSTCO.



CAUTION

This manual must be read and understood in its entirety, and used as part of an employee training program as required by OSHA or any applicable state agency.



CAUTION

This and any other included instructions must be made available to the user of the equipment. The user must understand how to safely and effectively use the system.

INTRODUCTION

Thank you for purchasing an Anchor Thread embedded anchoring system.
Our patented system is installed pre-pour to maximize safety and productivity by being available for inspection and utilization immediately upon stripping formwork.

APPLICABLE SAFETY STANDARDS

For the most current applicable safety standards, please reference our ICC-ES evaluation report.



ICC-ES ESR-4788



CAUTION

Understand the following definitions of those who work near or may be exposed to fall hazards.

WORKER CLASSIFICATIONS

QUALIFIED PERSON

A person with an accredited degree or certification, and with extensive experience or sufficient professional standing who is considered proficient in planning and reviewing the conformity of fall protection and rescue systems.

COMPETENT PERSON

A highly trained and experienced person who is ASSIGNED BY THE EMPLOYER to be responsible for all elements of a fall safety program, including, but not limited to its regulation, management, and application. A person who is proficient in identifying existing and predictable work hazards and who has the authority to stop work in order to eliminate hazards.

AUTHORIZED PERSON:

A person who is assigned by their employer to work around or subject to potential or existing fall hazards.



CAUTION

It is the responsibility of a Qualified or Competent Person to supervise the job site and ensure compliance with all applicable safety regulations.



WARNING

**Use of equipment in unintended applications may result in serious injury or death.
Maximum 1 attachment per Anchor Thread connection point.**





WARNING

Reference the engineered shop drawings for approved attachment details.

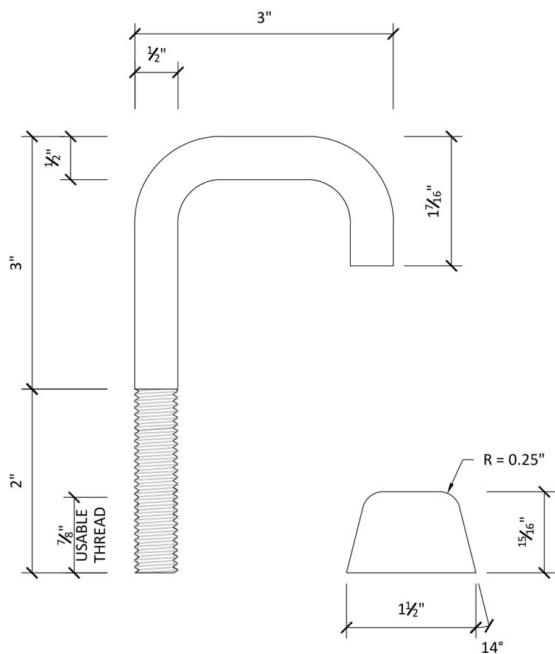
PRODUCT SPECIFIC APPLICATIONS

- FALL PROTECTION
 - LEADING-EDGE PROTECTION
 - SAFETY NETTING
 - DEBRIS NETTING
 - SHAFT NETTING
 - MEPS
 - CEILING SYSTEMS
 - CURTAIN WALL
 - WINDOW WALL
 - BUILDING MAINTENANCE SAFETY CONNECTION POINTS
 - EMERGENCY EVACUATION REPEL POINTS
 - ARCHITECTURAL DETAILS
 - EQUIPMENT TIE-DOWN POINT
 - TEMPORARY LIGHTING CONNECTION POINT
-

PREPARED BY:  BECKER ENGINEERING, PC 777 SUNRISE HIGHWAY SUITE 300 LYNBROOK, NY 11563 PHONE: (516) 561-5922 FAX: (516) 823-0219 EMAIL: BEPCDOBNOW@BEPC.US		CLIENT: AJUSTCO 99 MADISON AVENUE, SUITE 620 NEW YORK, NY 10016 PH: (646) 708-4422	SHEET NO. <u>1</u> OF <u>8</u> DESIGN BY <u>MG</u> DATE <u>09/28/21</u> CHECKED BY <u>AK</u> DATE <u>09/28/21</u> SCALE <u>AS SHOWN</u> ADDRESS _____ PROJECT NO.: <p style="text-align: center; font-weight: bold;">20-4624</p>
THESE SKETCHES WILL BE THE SUBJECT OF A COPYRIGHT PETITION AND MAY NOT BE REVISED OR ALTERED BY ANYONE WITHOUT THE WRITTEN AUTHORITY OF BECKER ENGINEERING, PC.			

ANCHOR THREAD J-BOLT SPEC SHEET
ZINC PLATED GRADE 5 STEEL

PRODUCT DESCRIPTION:
 THE ANCHOR THREAD IS AN EMBEDDED ANCHOR POINT THAT IS INSTALLED INTO THE CONCRETE FORMWORK AND BURIED IN THE CONCRETE TO BECOME A PERMANENT PART OF THE SUPERSTRUCTURE.

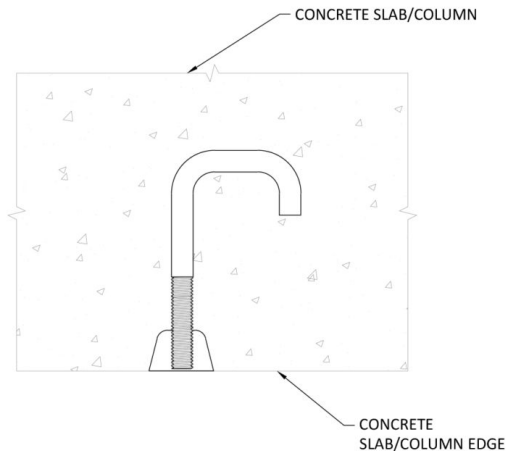


MATERIAL DIMENSIONS

SPECIFICATIONS
• ANCHOR BOLT MATERIAL: ZINC PLATED GRADE 5 STEEL
• THREAD SIZE: 1/2"-13 UNC RIGHT HAND TURN
• USABLE THREAD: 7/8"
• CAVITY DEPTH: 15/16"
• CAVITY BASE DIAMETER: 1 1/2"
• CAVITY TAPER: 14 DEGREES

ANCHOR CAPACITY (ULTIMATE LOAD)
• TENSILE = 6,000 LBS
• SHEAR = 9,100 LBS

NOTE: ANCHOR CAPACITIES BASED ON 4,000 PSI NORMAL WEIGHT CONCRETE AND 6" MINIMUM EDGE DISTANCE



TYPICAL INSTALLATION

PREPARED BY:



BECKER ENGINEERING, PC
777 SUNRISE HIGHWAY SUITE 300
LYNBROOK, NY 11563
PHONE: (516) 561-5922
FAX: (516) 823-0219
EMAIL: BEPCDOBNOW@BEPC.US



CLIENT:

AJUSTCO
99 MADISON AVENUE, SUITE 620
NEW YORK, NY 10016
PH: (646) 708-4422

SHEET NO. 2 OF 8

DESIGN BY MG DATE 09/28/21

CHECKED BY AK DATE 09/28/21

SCALE AS SHOWN

ADDRESS _____

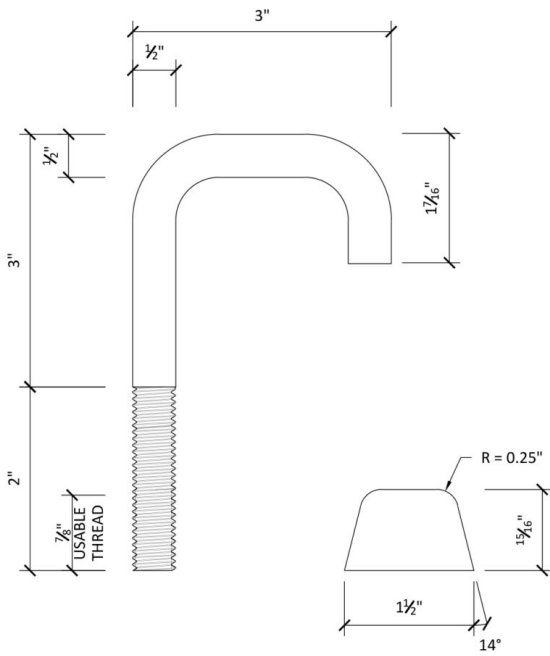
PROJECT NO.: **20-4624**

THESE SKETCHES WILL BE THE SUBJECT OF A COPYRIGHT PETITION AND MAY NOT BE REVISED OR ALTERED BY ANYONE WITHOUT THE WRITTEN AUTHORITY OF BECKER ENGINEERING, PC.

ANCHOR THREAD J-BOLT SPEC SHEET

316 STAINLESS STEEL

PRODUCT DESCRIPTION:
THE ANCHOR THREAD IS AN EMBEDDED ANCHOR POINT THAT IS INSTALLED INTO THE CONCRETE FORMWORK AND BURIED IN THE CONCRETE TO BECOME A PERMANENT PART OF THE SUPERSTRUCTURE.

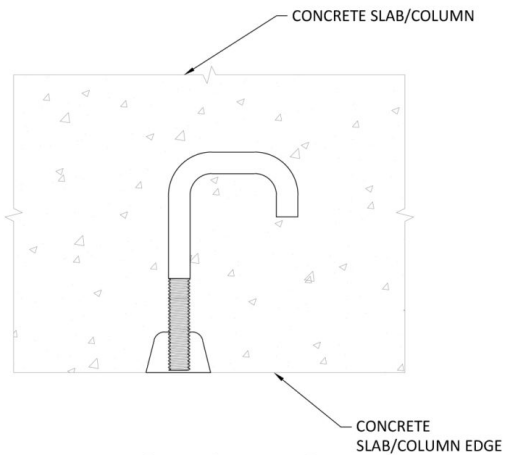


SPECIFICATIONS	
•	ANCHOR BOLT MATERIAL: 316 STAINLESS STEEL
•	THREAD SIZE: 1/2"-13 UNC RIGHT HAND TURN
•	USABLE THREAD: 7/8"
•	CAVITY DEPTH: 15/16"
•	CAVITY BASE DIAMETER: 1 1/2"
•	CAVITY TAPER: 14 DEGREES

ANCHOR CAPACITY (ULTIMATE LOAD)	
•	TENSILE = 6,000 LBS
•	SHEAR = 6,750 LBS

NOTE: ANCHOR CAPACITIES BASED ON 4,000 PSI NORMAL WEIGHT CONCRETE AND 6" MIN. EDGE DISTANCE

MATERIAL DIMENSIONS



TYPICAL INSTALLATION

PREPARED BY:



BECKER ENGINEERING, PC
777 SUNRISE HIGHWAY SUITE 300
LYNBROOK, NY 11563
PHONE: (516) 561-5922
FAX: (516) 823-0219
EMAIL: BEPCDOBNOW@BEPC.US



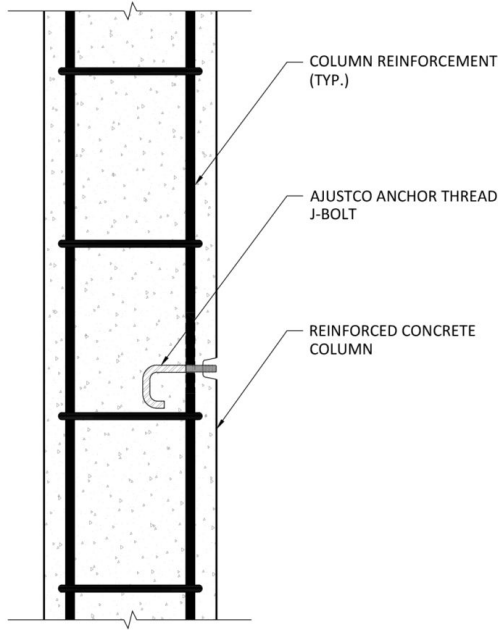
CLIENT:

AJUSTCO
99 MADISON AVENUE, SUITE 620
NEW YORK, NY 10016
PH: (646) 708-4422

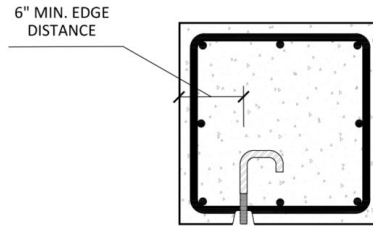
SHEET NO. 3 OF 8
DESIGN BY MG DATE 09/28/21
CHECKED BY AK DATE 09/28/21
SCALE AS SHOWN

ADDRESS _____
PROJECT NO.: **20-4624**

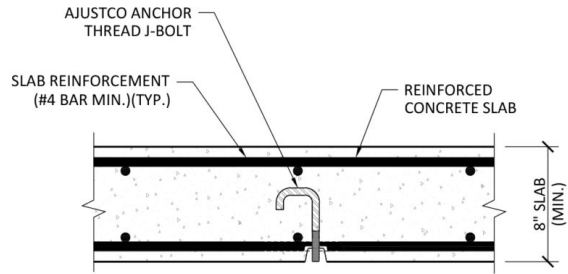
THESE SKETCHES WILL BE THE SUBJECT OF A COPYRIGHT PETITION AND MAY NOT BE REVISED OR ALTERED BY ANYONE WITHOUT THE WRITTEN AUTHORITY OF BECKER ENGINEERING, PC.



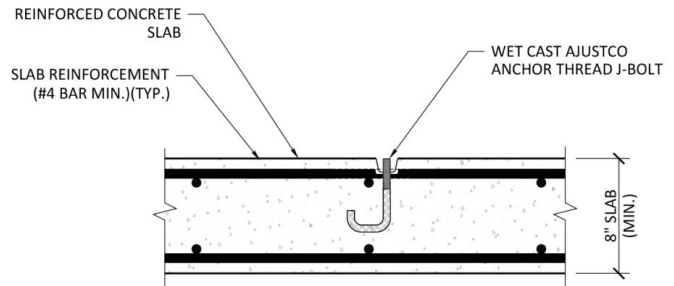
CONCRETE COLUMN INSTALLATION



RECTANGULAR COLUMN INSTALLATION



UNDER SLAB INSTALLATION



ABOVE SLAB INSTALLATION

- INSTALLATION INSTRUCTIONS:**
1. IDENTIFY AND MARK ANCHOR THREAD J-BOLT LOCATION.
 2. INSTALL AJUSTCO J-BOLT.
 3. INSTALL ANCHOR THREAD PRIOR TO INSTALLING CONCRETE FORMWORK.
 4. ANCHOR THREAD SHALL BE CAPPED AND SIT FLUSH WITH FACE OF CONCRETE COLUMN/WALL.
 5. J-BOLT SHALL BE INSPECTED PRIOR TO PLACING CONCRETE.
 6. ENSURE THE ANCHOR THREAD IS SECURED IN PLACE PRIOR TO PLACING CONCRETE.
 7. CONCRETE SHALL ACHIEVE AT LEAST 4,000 PSI (MIN.) STRENGTH PRIOR TO USING THE ANCHOR THREAD.
 8. ABANDON ANCHOR THREAD WHEN NO LONGER IN USE.

- INSPECTION RECOMMENDATIONS:**
1. J-BOLT EXPOSED THREADED ROD SHALL BE INSPECTED BEFORE EACH USE FOR ANY DAMAGE.
 2. DO NOT USE IF THERE ARE SIGNS OF DAMAGE AND/OR TAMPERING.
 3. INSPECT ANCHORS FOR DAMAGE AT LEAST ONCE A WEEK AND AFTER ANY OCCURRENCE WHICH COULD AFFECT THE INTEGRITY OF THE SYSTEM.

PREPARED BY:



BECKER ENGINEERING, PC
777 SUNRISE HIGHWAY SUITE 300
LYNBROOK, NY 11563
PHONE: (516) 561-5922
FAX: (516) 823-0219
EMAIL: BEPCDOBNOW@BEPC.US



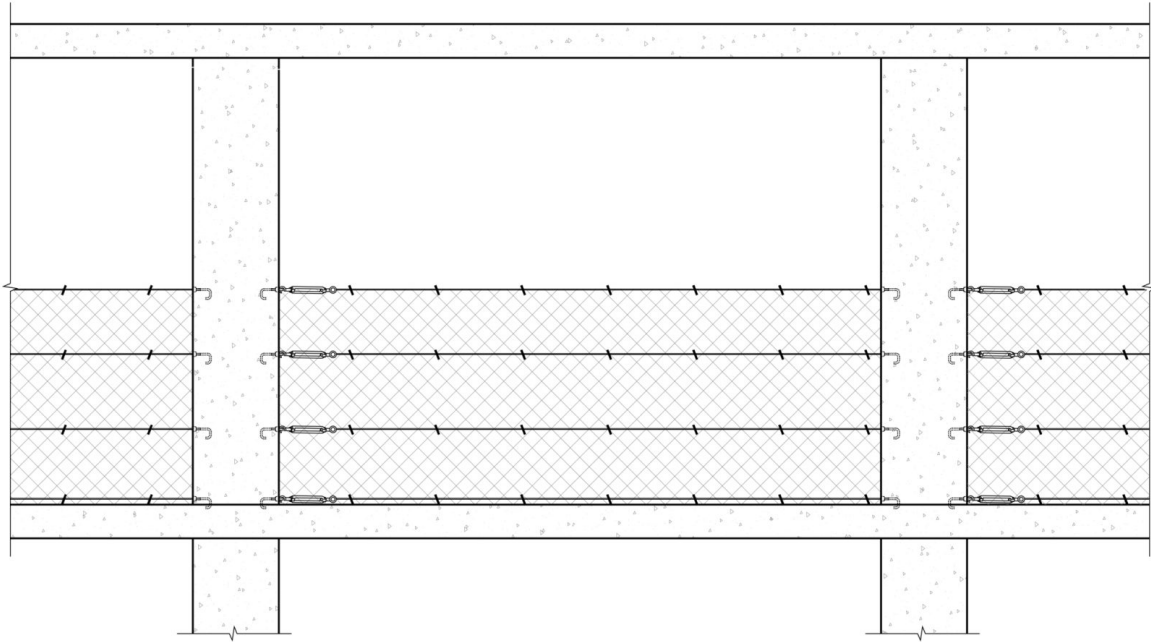
CLIENT:

AJUSTCO
99 MADISON AVENUE, SUITE 620
NEW YORK, NY 10016
PH: (646) 708-4422

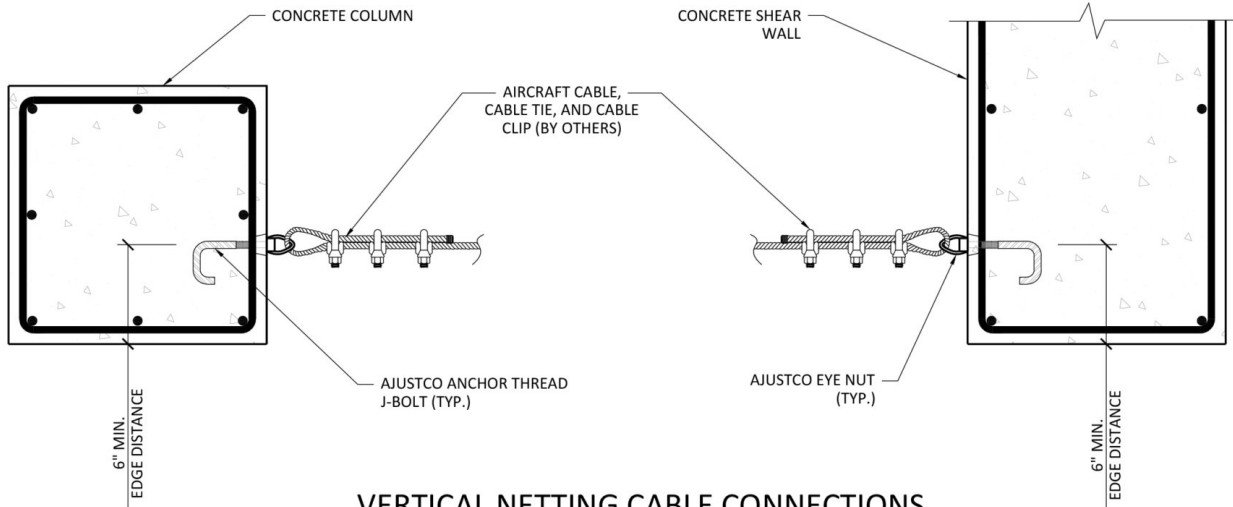
SHEET NO. 4 OF 8
DESIGN BY MG DATE 09/28/21
CHECKED BY AK DATE 09/28/21
SCALE AS SHOWN

ADDRESS _____
PROJECT NO.: 20-4624

THESE SKETCHES WILL BE THE SUBJECT OF A COPYRIGHT PETITION AND MAY NOT BE REVISED OR ALTERED BY ANYONE WITHOUT THE WRITTEN AUTHORITY OF BECKER ENGINEERING, PC.



TYPICAL VERTICAL NETTING ELEVATION



VERTICAL NETTING CABLE CONNECTIONS

NOTES:

1. CONTRACTOR SHALL FOLLOW AJUSTCO INSTALLATION MANUAL WHEN INSTALLING ANCHOR THREAD.
2. CONCRETE SHALL REACH 28-DAY STRENGTH PRIOR TO USE.
3. NETTING AND COMPONENTS BY OTHERS.
4. CONNECTION TO BOTH COLUMNS AND SHEAR WALLS ARE ACCEPTABLE.
5. BUILDING ENGINEER SHALL VERIFY BUILDING STRUCTURE CAN SUPPORT LOADS IMPOSED BY AJUSTCO ANCHOR.

PREPARED BY:



BECKER ENGINEERING, PC
777 SUNRISE HIGHWAY SUITE 300
LYNBROOK, NY 11563
PHONE: (516) 561-5922
FAX: (516) 823-0219
EMAIL: BEPCDOBNOW@BEPC.US



CLIENT:

AJUSTCO
99 MADISON AVENUE, SUITE 620
NEW YORK, NY 10016
PH: (646) 708-4422

SHEET NO. 5 OF 8

DESIGN BY MG DATE 09/28/21

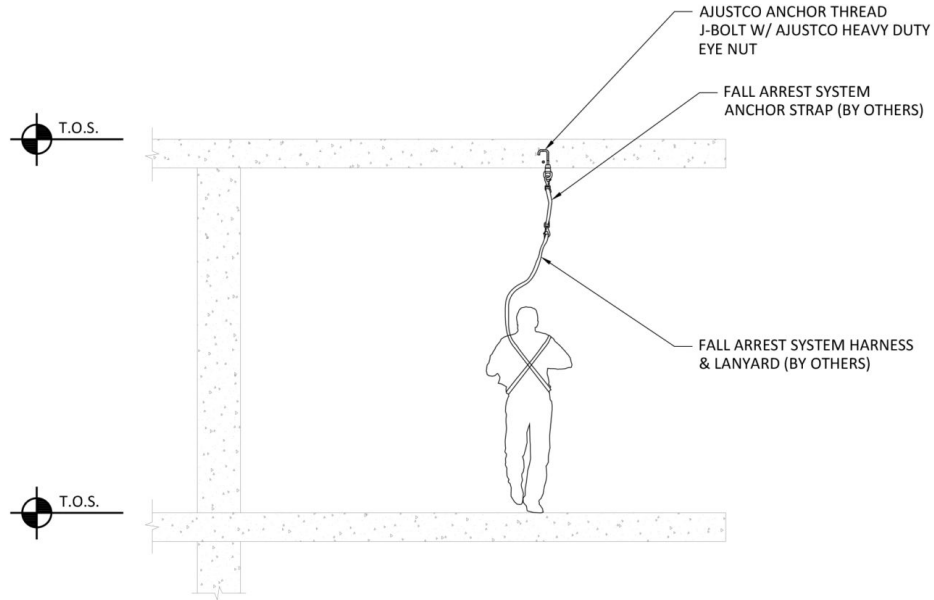
CHECKED BY AK DATE 09/28/21

SCALE AS SHOWN

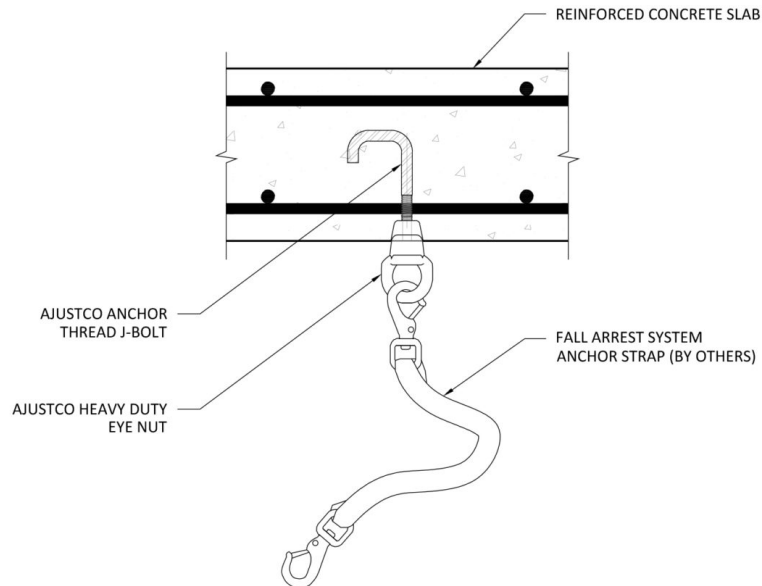
ADDRESS _____

PROJECT NO.:
20-4624

THESE SKETCHES WILL BE THE SUBJECT OF A COPYRIGHT PETITION AND MAY NOT BE REVISED OR ALTERED BY ANYONE WITHOUT THE WRITTEN AUTHORITY OF BECKER ENGINEERING, PC.



TYPICAL FALL ARREST SYSTEM ANCHOR ELEVATION



FALL ARREST SYSTEM ANCHOR STRAP CONNECTION

NOTES:

1. CONTRACTOR SHALL FOLLOW AJUSTCO INSTALLATION MANUAL WHEN INSTALLING ANCHOR THREAD.
2. BUILDING ENGINEER SHALL VERIFY BUILDING STRUCTURE CAN SUPPORT LOADS IMPOSED BY AJUSTCO ANCHOR.

PREPARED BY:



BECKER ENGINEERING, PC
777 SUNRISE HIGHWAY SUITE 300
LYNBROOK, NY 11563
PHONE: (516) 561-5922
FAX: (516) 823-0219
EMAIL: BEPCDOBNOW@BEPC.US



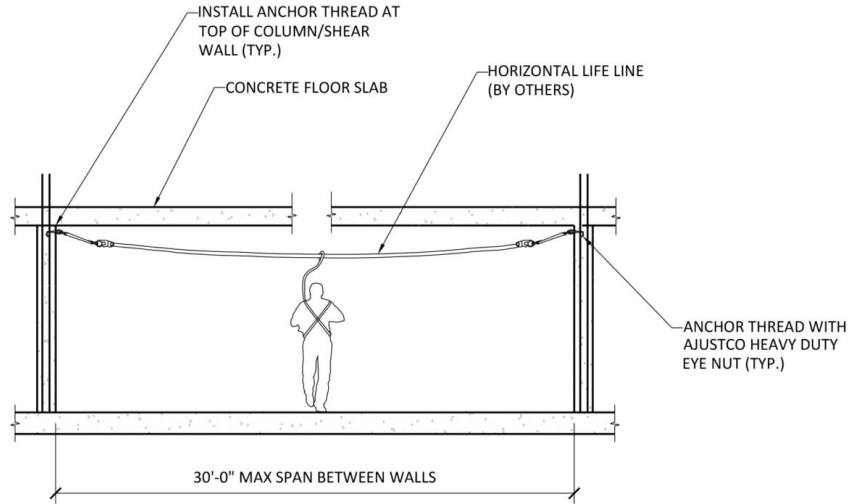
CLIENT:

AJUSTCO
99 MADISON AVENUE, SUITE 620
NEW YORK, NY 10016
PH: (646) 708-4422

SHEET NO. 6 OF 8
DESIGN BY MG DATE 09/28/21
CHECKED BY AK DATE 09/28/21
SCALE AS SHOWN

ADDRESS _____
PROJECT NO.:
20-4624

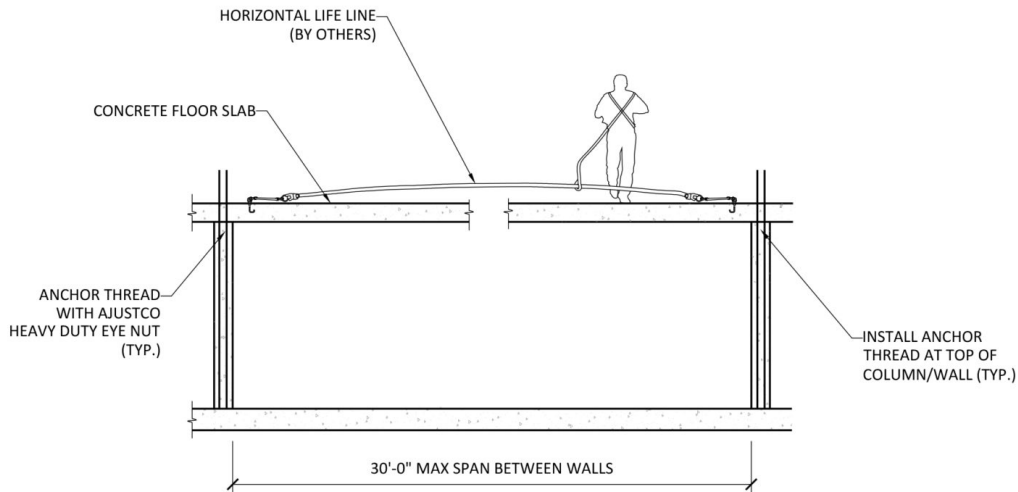
THESE SKETCHES WILL BE THE SUBJECT OF A COPYRIGHT PETITION AND MAY NOT BE REVISED OR ALTERED BY ANYONE WITHOUT THE WRITTEN AUTHORITY OF BECKER ENGINEERING, PC.



ANCHOR THREAD LIFELINE DETAIL I

NOTES:

1. CONTRACTOR SHALL FOLLOW AJUSTCO INSTALLATION MANUAL WHEN INSTALLING ANCHOR THREAD.
2. VERIFY ANCHOR THREAD AND AJUSTCO HEAVY DUTY EYE NUT AT EACH END OF THE HORIZONTAL LIFELINE ARE INSTALLED AS REQUIRED.
3. WALL CONCRETE MUST HAVE ATTAINED A COMPRESSIVE STRENGTH OF 3000 PSI MINIMUM BEFORE ANCHOR THREAD IS USED.
4. HORIZONTAL LIFE LINE AND RELATED ATTACHMENTS/EQUIPMENT (BY OTHERS).
5. BUILDING ENGINEER SHALL VERIFY BUILDING STRUCTURE CAN SUPPORT LOADS IMPOSED BY AJUSTCO ANCHOR.



ANCHOR THREAD LIFELINE DETAIL II

NOTE:

1. SEE DETAIL ABOVE FOR NOTES.

PREPARED BY:



BECKER ENGINEERING, PC
777 SUNRISE HIGHWAY SUITE 300
LYNBROOK, NY 11563
PHONE: (516) 561-5922
FAX: (516) 823-0219
EMAIL: BEPCDOBNOW@BEPC.US



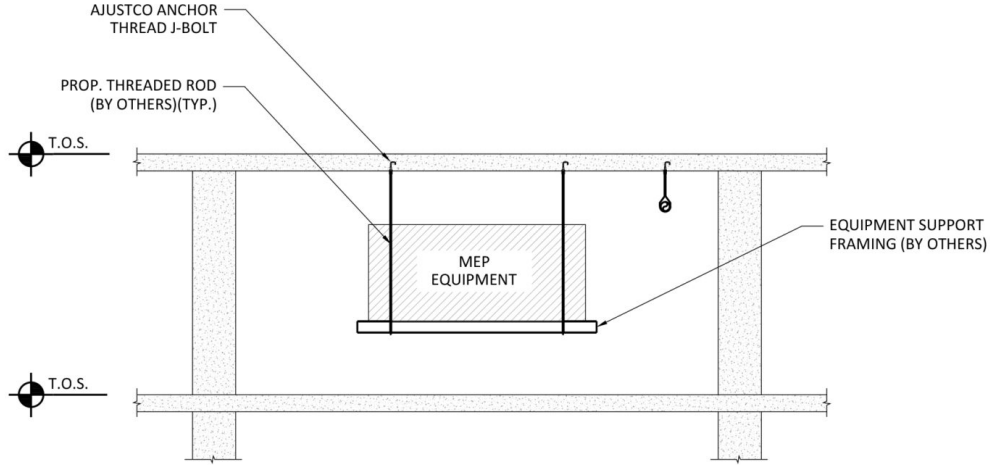
CLIENT:

AJUSTCO
99 MADISON AVENUE, SUITE 620
NEW YORK, NY 10016
PH: (646) 708-4422

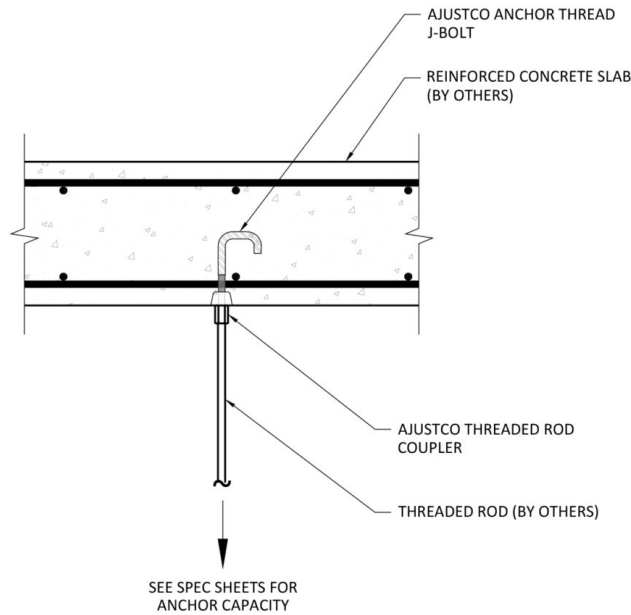
SHEET NO. 7 OF 8
DESIGN BY MG DATE 09/28/21
CHECKED BY AK DATE 09/28/21
SCALE AS SHOWN

ADDRESS _____
PROJECT NO.: **20-4624**

THESE SKETCHES WILL BE THE SUBJECT OF A COPYRIGHT PETITION AND MAY NOT BE REVISED OR ALTERED BY ANYONE WITHOUT THE WRITTEN AUTHORITY OF BECKER ENGINEERING, PC.



TYPICAL SUSPENDED EQUIPMENT SUPPORT ELEVATION



ANCHOR THREAD CONNECTION DETAIL

- NOTES:
1. CONTRACTOR SHALL FOLLOW AJUSTCO INSTALLATION MANUAL WHEN INSTALLING ANCHOR THREAD.
 2. CONCRETE SHALL REACH 28-DAY STRENGTH PRIOR TO USE.
 3. BUILDING ENGINEER SHALL VERIFY BUILDING STRUCTURE CAN SUPPORT LOADS IMPOSED BY AJUSTCO ANCHOR.

PREPARED BY:



BECKER ENGINEERING, PC
777 SUNRISE HIGHWAY SUITE 300
LYNBROOK, NY 11563
PHONE: (516) 561-5922
FAX: (516) 823-0219
EMAIL: BEPCDOBNOW@BEPC.US



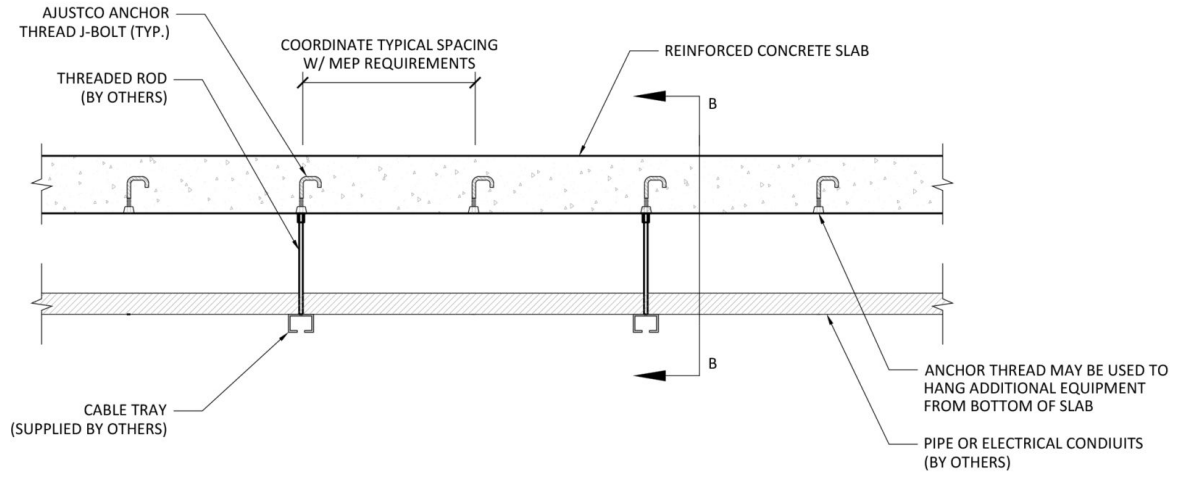
CLIENT:

AJUSTCO
99 MADISON AVENUE, SUITE 620
NEW YORK, NY 10016
PH: (646) 708-4422

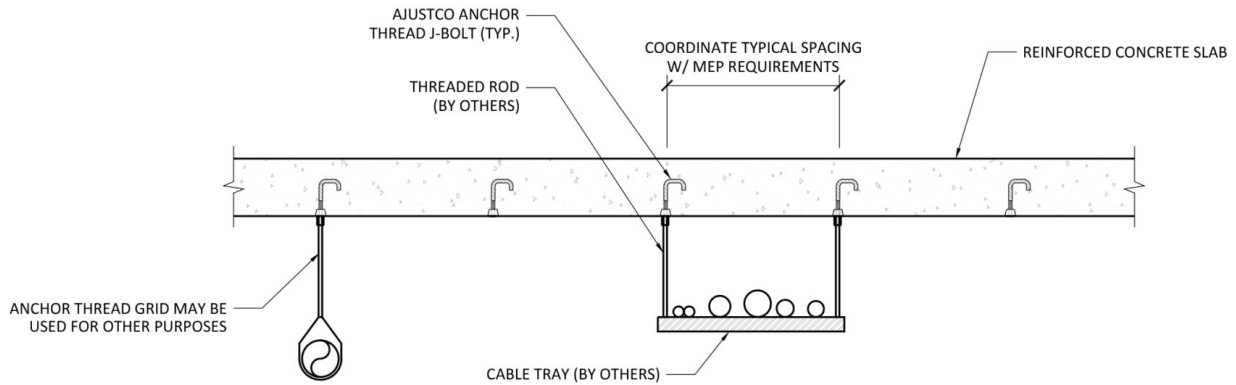
SHEET NO. 8 OF 8
DESIGN BY MG DATE 09/28/21
CHECKED BY AK DATE 09/28/21
SCALE AS SHOWN

ADDRESS _____
PROJECT NO.: 20-4624

THESE SKETCHES WILL BE THE SUBJECT OF A COPYRIGHT PETITION AND MAY NOT BE REVISED OR ALTERED BY ANYONE WITHOUT THE WRITTEN AUTHORITY OF BECKER ENGINEERING, PC.



TYP. ANCHOR THREAD GRID LAYOUT SECTION I



TYP. ANCHOR THREAD GRID LAYOUT SECTION II

- NOTE:
1. BUILDING ENGINEER SHALL VERIFY BUILDING STRUCTURE CAN SUPPORT LOADS IMPOSED BY AJUSTCO ANCHOR.

COMPONENTS

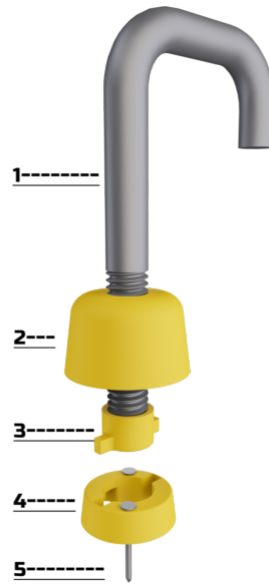
1- ANCHOR BOLT

2- ESCUTCHEON

3- LOCK NUT

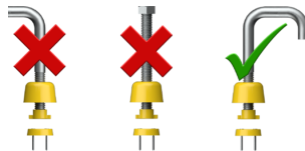
4- LOCK PLATE

5- NAILS



WARNING

Do not use any third party anchor bolts in place of the anchor bolt provided with the Anchor Thread. The plastic components have a single use service life.



SPECIFICATIONS

ANCHORING SYSTEM:

**WORKING LOAD LIMIT:
-5,000 lbs/2,267.96 kgs**



WARNING

Do not exceed this rating!

MATERIALS:

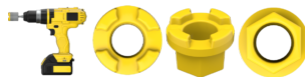
-RECYCLABLE PLASTIC

-316L STAINLESS STEEL OR ASTM A325-14 G5 ZINC PLATED STEEL

-VINYL COATED STEEL

REMOVAL TOOL:

SOCKET SIZE: 3/4IN/19MM



CAUTION

Consult the engineer of record and all applicable regulatory agencies for minimum concrete requirements and position specifications.

INSTALLATION AND USE

BOTTOM OF SLAB APPLICATION

STEP 1:



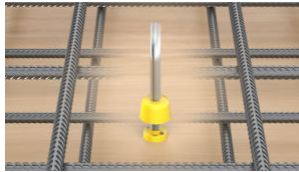
NAIL THE LOCK PLATE TO THE FORMWORK WHERE SPECIFIED.

STEP 2:



INSTALL THE REINFORCING STEEL.

STEP 3:



INSERT THE ANCHOR BOLT ASSEMBLY AND TURN 90 DEGREES CLOCKWISE TO LOCK IT IN.

***DO NOT TURN PAST 90 DEGREES!**

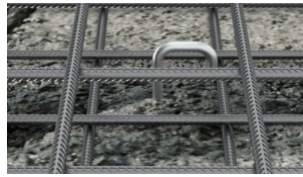
STEP 4:



TURN THE ESCUTCHEON CLOCKWISE UNTIL IT IS SNUG AGAINST THE FORMWORK TO SEAL THE ASSEMBLY.

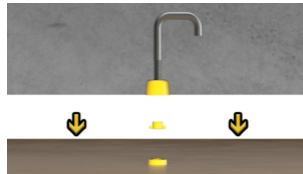
***DO NOT OVERTIGHTEN!**

STEP 5:



WITH ALL OF THE ANCHOR THREADS INSTALLED YOU ARE READY TO PLACE YOUR CONCRETE.

STEP 6:



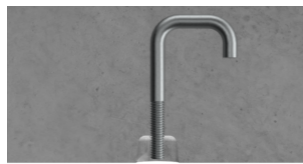
WHEN THE QUALIFIED PERSON CONFIRMS THAT THE CONCRETE HAS ACHIEVED THE REQUIRED STRENGTH YOU ARE READY TO STRIP THE FORMWORK.

STEP 7:



USE THE INCLUDED ESCUTCHEON REMOVAL TOOL TO BACK OUT THE ESCUTCHEON.

STEP 8:



ONCE ALL APPLICABLE INSPECTIONS AND TESTS HAVE BEEN SUCCESSFULLY COMPLETED, THE ANCHOR THREADS ARE READY TO BE UTILIZED.

***ALL ILLUSTRATIONS ARE NOT DRAWN TO SCALE.**

COLUMN APPLICATION

STEP 1:



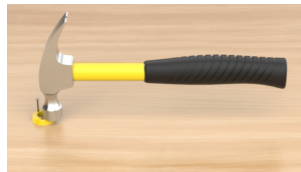
MARK THE DESIRED CENTER OF THE LOCK PLATE LOCATION.

STEP 2:



MARK THE HEIGHT OF EACH ANCHOR THREAD.

STEP 3:



NAIL THE LOCK PLATE TO THE FORMWORK WHERE SPECIFIED.

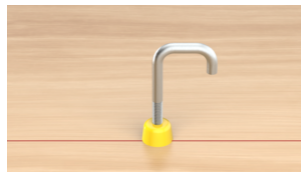
STEP 4:



INSERT THE ANCHOR BOLT ASSEMBLY AND TURN 90 DEGREES CLOCKWISE TO LOCK IT IN.

***DO NOT TURN PAST 90 DEGREES!**

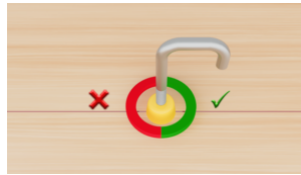
STEP 5:



TURN THE ESCUTCHEON CLOCKWISE UNTIL IT IS SNUG AGAINST THE FORMWORK TO SEAL THE ASSEMBLY.

***DO NOT OVERTIGHTEN!**

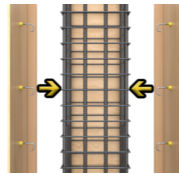
STEP 6:



ENSURE THAT THE ANCHOR BOLT IS ORIENTED SUCH THAT THE DOUBLE BEND IS WITHIN THE ACCEPTABLE RANGE AS OUTLINED ABOVE.

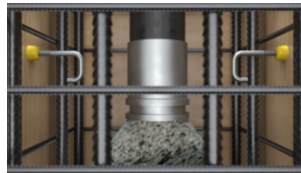
IF THE ANCHOR BOLT IS NOT ORIENTED WITHIN THE ACCEPTABLE RANGE, REMOVE THE ANCHOR BOLT ASSEMBLY, FLIP IT 180 DEGREES, REINSERT AND TIGHTEN DOWN.

STEP 7:



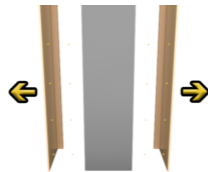
WITH ALL OF THE ANCHOR THREADS INSTALLED YOU ARE READY TO ASSEMBLE THE FORMS.

STEP 8:



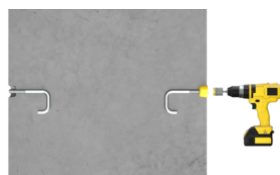
ONCE ALL OF THE FORMS ARE ASSEMBLED YOU ARE READY TO PLACE YOUR CONCRETE.

STEP 9:



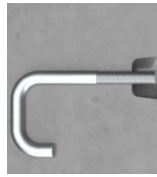
WHEN THE QUALIFIED PERSON CONFIRMS THAT THE CONCRETE HAS ACHIEVED THE REQUIRED STRENGTH YOU ARE READY TO STRIP THE FORMWORK.

STEP 10:



USE THE INCLUDED ESCUTCHEON REMOVAL TOOL TO BACK OUT THE ESCUTCHEON.

STEP 11:



ONCE ALL APPLICABLE INSPECTIONS AND TESTS HAVE BEEN SUCCESSFULLY COMPLETED, THE ANCHOR THREADS ARE READY TO BE UTILIZED.

*ALL ILLUSTRATIONS ARE NOT DRAWN TO SCALE.



CAUTION

IF AN ANCHOR THREAD FAILS INSPECTION IN ANY WAY, IMMEDIATELY DECOMMISSION THE ANCHOR POINT AND ALERT ALL APPLICABLE QUALIFIED/COMPETENT PERSONNEL.

MAINTENANCE AND STORAGE

BEFORE INSTALLING, KEEP ANCHOR THREADS FREE OF EXCESSIVE MOISTURE, CHEMICALS OR OTHER DEGRADING ELEMENTS.

ONCE INSTALLED, KEEP THE ANCHOR THREADS CLEAN OF RUST AND DEBRIS.

INSPECTION

PRIOR TO EACH USE, INSPECT THE ANCHOR THREAD FOR DAMAGE, INCLUDING BUT NOT LIMITED TO, CORROSION, DEFORMATION, PITS, BURRS, CRACKING, RUST, FATIGUE, AND ALTERATION. IMMEDIATELY ABANDON THE ANCHOR THREAD IF THE PRODUCT FAILS INSPECTION IN ANY WAY.

SAFETY INFORMATION



CAUTION

DO NOT USE THREAD ADHESIVES ON ANCHOR THREADS!



CAUTION

DO NOT ALTER ANCHOR THREADS!



WARNING

FAILURE TO UNDERSTAND AND COMPLY WITH THE SAFETY REGULATIONS MAY RESULT IN SERIOUS INJURY OR DEATH! INSTRUCTIONS HERIN ARE NOT ALL-INCLUSIVE, ARE FOR REFERENCE ONLY, AND ARE NOT INTENDED TO REPLACE A COMPETENT PERSON'S JUDGEMENT OR KNOWLEDGE OF FEDERAL OR STATE STANDARDS AND REGULATIONS.



WARNING

BEFORE PLACEING THE ANCHOR THREAD, CONSULT WITH THE SITE STRUCTURAL ENGINEER TO CONFIRM THAT THE CONCRETE STRENGTH WILL BE SUFFICIENT FOR THE INTENDED APPLICATION.

THE ANCHOR THREAD MUST BE PLACED IN ACCORDANCE WITH ALL INSTRUCTIONS AND APPLICABLE CODES. THE ANCHOR THREAD PRODUCT MUST BE PLACED STRAIGHT INTO THE FORMWORK BEFORE THE CONCRETE IS POURED.

DO NOT OVER-TIGHTEN ANCHOR THREAD PRODUCT. FAILURE TO PLACE THE ANCHOR THREAD IN ACCORDANCE WITH ALL INSTRUCTIONS MAY RESULT IN SERIOUS INJURY OR DEATH.



WARNING

USE OF ANCHOR THREAD PRODUCT IN UNINTENDED APPLICATIONS MAY RESULT IN SERIOUS INJURY OR DEATH.



WARNING

NEVER MAKE INCOMPATIBLE CONNECTIONS. AVOID CONTACT WITH SHARP AND ABRASIVE EDGES AND SURFACES.



WARNING

**MAXIMUM CAPACITY OF THE ANCHOR THREAD PRODUCT IS 5,000 LBS. /2,267.96KGS.
DO NOT EXCEED THE CAPACITY OF THE ANCHOR THREAD PRODUCT. IF DURING
INSTALLATION ANCHOR THREAD FAILS, THE ANCHOR THREAD PRODUCT SHOULD BE
REMOVED AND PATCHED WITH AN APPROVED CEMENT MATERIAL. EXCEEDING
MAXIMUM CAPACITY MAY RESULT IN SERIOUS INJURY OR DEATH.**

ANCHOR THREAD

- WORKLOAD: 5,000LBS. (2,268KGS.)
- 50 UNITS PER BOX

- MOUNTING NAILS INCLUDED
- REMOVAL TOOLS INCLUDED

WHITE CAP SKU / DESCRIPTION

ZINC PLATED STEEL

263AT500RZ	1/2"-13 RED
163AT500YZ	1/2"-13 YELLOW
263AT500GZ	1/2"-13 GREEN
263AT500BZ	1/2"-13 BLUE
263AT500OZ	1/2"-13 ORANGE*



316L STAINLESS STEEL

263AT500R55	1/2"-13 RED
163AT500Y55	1/2"-13 YELLOW
263AT500G55	1/2"-13 GREEN
263AT500B55	1/2"-13 BLUE
263AT500O55	1/2"-13 ORANGE*

* ORANGE INCLUDES 50 STANDARD EYE NUTS FOR CABLE RAIL LEADING EDGE PROTECTION.



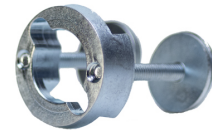
ACCESSORIES



- 263AT500ANKEA**
 - 1/2"-13 ANCHOR NUT KIT
 - WORKLOAD: 5,000LBS.
 -MAX. SUBSTRATE THICKNESS:
 7/16" (11.1MM)
 - 1 ASSEMBLY PER BAG



- 263AT500HDNEA**
 - 1/2"-13 HEAVY DUTY EYE NUT
 - WORKLOAD: 5,000LBS.
 -ANSI/ASSP Z359.18-2017 TYPE T
 - 1 UNIT PER BAG



- 263AT500BLP**
 - 1/2"-13 BOLTABLE LOCK PLATE
 - 25 UNITS PER BOX



- 263AT500ANWEA**
 - 1/2"-13 ANCHOR NUT WRENCH
 - 1 UNIT PER BAG

- | | |
|--------------|--------------------------|
| 263AT500RPR | RED |
| 263AT500RPO | ORANGE |
| 263AT500RPG | GREEN |
| 263AT500RPY | YELLOW |
| 263AT500RPB | BLUE |
| 263AT500RPGD | GLOW IN THE DARK |
| 263AT500RPL | LIMESTONE GREY (NO LOGO) |
- 1/2"-13 RUBBER PLUG
 - 50 UNITS PER BOX

